



COIL

METAL FABRICATION

COIL

METAL FABRICATION



home of

The Original Buffalo Boot

For Ordering Assistance

See Counter Associate

www.coilmetalfabrication.com

Coil Metal Fabrication

Formerly known as Coyle Sheet Metal, Coil Metal Fabrication is an industry leading sheet metal fabricator, specializing in the HVAC Industry since 1959.

Located in Western New York, we serve the HVAC wholesale community and its dealers by producing and distributing the highest quality line of fabricated metal products available in the industry – competitively priced.

As the Originator of “The Buffalo Boot,” we revolutionized the industry and proudly carry on a tradition of innovation and customization today. HVAC professionals rely on Coil Metal Fabrication as a trusted partner for tailored, peak performing HVAC sheet metal systems.

Consultation | Manufacturing | Delivery

Proudly made in the U.S.A. 

“Hire quality craftsmen, use quality materials, make a high-quality product, deliver in a timely manner, and you will be successful!”

– Coil Metal Fabrication Founders

COIL

METAL FABRICATION

THE ORIGINAL BUFFALO BOOT



Model **BB**

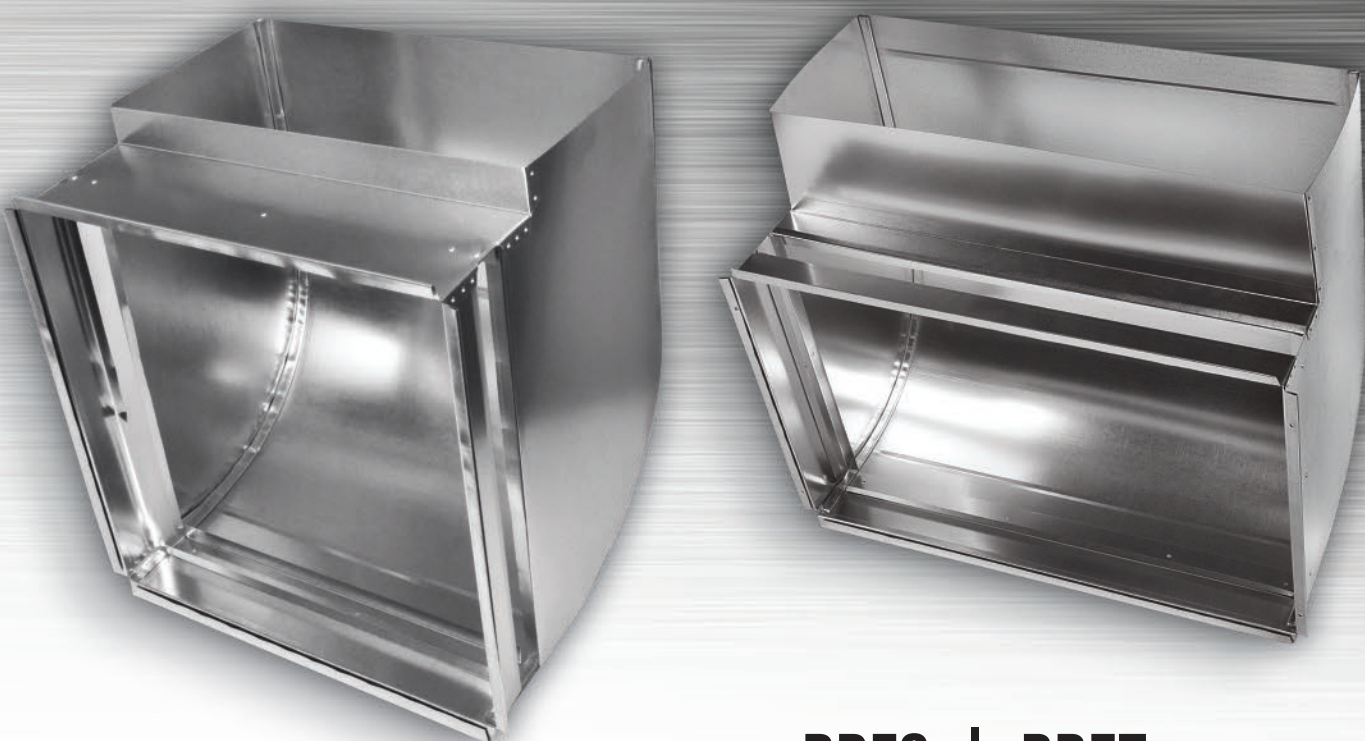
Features

- Slip Drive or Snap Lock options
- Made in the U.S.A. 
- Made of galvanized steel 24-28 gauge
- Pre-drilled for easy installation and labor savings
- Ribbed construction for extra support

Dimensions

OPENING SIZE (H" x W")	RETURN AIR (H" x W")	THROAT (inches)
16 x 20	8 x 20	1 1/2 -or- 6
16 x 25	8 x 24	1 1/2 -or- 6
16 x 25	10 x 24	1 1/2 -or- 6
16 x 25	12 x 24	1 1/2 -or- 6
20 x 25	8 x 24	1 1/2 -or- 6
20 x 25	10 x 24	1 1/2 -or- 6
20 x 25	12 x 2 4	1 1/2 -or- 6

THE ORIGINAL BUFFALO BOOT



BBFS | BBFT

Models

- Slip Drive or Snap Lock options
- Made in the U.S.A. 

- Made of galvanized steel 24-28 gauge
- Pre-drilled for easy installation and labor savings
- Ribbed construction for extra support

Features

Dimensions

OPENING SIZE (H" x W")	RETURN AIR (H" x W")	THROAT (inches)	TOP or SIDE LOAD
16 x 20	8 x 20	1 1/2 -or- 6	Top / Side
16 x 25	8 x 24	1 1/2 -or- 6	Top / Side
16 x 25	10 x 24	1 1/2 -or- 6	Top / Side
16 x 25	12 x 24	1 1/2 -or- 6	Top / Side
20 x 25	8 x 24	1 1/2 -or- 6	Top / Side
20 x 25	10 x 24	1 1/2 -or- 6	Top / Side
20 x 25	12 x 2 4	1 1/2 -or- 6	Top / Side

MEDIA BOOT



CABINET BOOT



**We Custom Fit
to All Manufacturer's
Specifications**

Model **BBM**

Features

- Slip Drive or Snap Lock options
- Made in the U.S.A. 
- Made of galvanized steel 24-28 gauge
- Pre-drilled for easy installation and labor savings
- Ribbed construction for extra support
- Enclosed media

Dimensions

OPENING SIZE (H" x W")	RETURN AIR (H" x W")	THROAT (inches)
16 x 20	8 x 20	1 1/2 -or- 6
16 x 25	8 x 24	1 1/2 -or- 6
16 x 25	10 x 24	1 1/2 -or- 6
16 x 25	12 x 24	1 1/2 -or- 6
20 x 25	8 x 24	1 1/2 -or- 6
20 x 25	10 x 24	1 1/2 -or- 6
20 x 25	12 x 2 4	1 1/2 -or- 6

Model **BBC**

Features

- Slip Drive or Snap Lock options 
- Made in the U.S.A.
- Made of galvanized steel 24-28 gauge
- Pre-drilled for easy installation and labor savings
- Ribbed construction for extra support
- Boots sized to manufacturer specifications

Dimensions


OPENING SIZE (H" x W")	RETURN AIR (H" x W")	THROAT (inches)	TOP or SIDE LOAD
16 x 20	8 x 20	1 1/2 -or- 6	Top / Side
16 x 25	8 x 24	1 1/2 -or- 6	Top / Side
16 x 25	10 x 24	1 1/2 -or- 6	Top / Side
16 x 25	12 x 24	1 1/2 -or- 6	Top / Side
20 x 25	8 x 24	1 1/2 -or- 6	Top / Side
20 x 25	10 x 24	1 1/2 -or- 6	Top / Side
20 x 25	12 x 2 4	1 1/2 -or- 6	Top / Side

FULL RETURN AIR ASSEMBLY



Description

Return Air Drop Kit


- Features
- Slip Drive or Snap Lock options
 - Made in the U.S.A. 
 - Made of galvanized steel 24-28 gauge
 - Pre-drilled for easy installation and labor savings
 - Ribbed construction for extra support
- Complete Return Kit Includes
- Filter Boot
 - Starting Collar
 - Two 3 foot sections of trunk
 - Slips and Drives

SUPPLY AIR PLENUM



We Custom Fit
to All Manufacturer's
Specifications

2-Piece Plenum with Cap

- Made in the U.S.A. 
- Hemmed for precise fit
- Insulated upon request
- Slip Drive or Snap Lock options
- Made of galvanized steel 24-28 gauge
- Ribbed construction for extra support
- Custom Plenums made to your specifications

HEIGHT	WIDTH	DEPTH
35	14	To Manufacturer's Specs
35	17	To Manufacturer's Specs
35	21	To Manufacturer's Specs
35	24	To Manufacturer's Specs
47	14	To Manufacturer's Specs
47	17	To Manufacturer's Specs
47	21	To Manufacturer's Specs
47	24	To Manufacturer's Specs

RETURN AIR BASE



Description

Return Air Base Standard

Features

- 1/2" Support Flange
- Made of galvanized steel 24-28 gauge
- Ribbed construction for ultimate integrity
- Custom sizes made to your specifications
- Made in the U.S.A. 
- Hemmed for precise fit

Dimensions

HEIGHT	WIDTH	DEPTH
8	A	28
8	B	28
8	C	28
8	D	28
16	A	28
16	B	28
16	C	28
16	D	28
22	A	28
22	B	28
22	C	28
22	D	28

COLLARS



We Custom Fit
to All Manufacturer's
Specifications

Collars & Starting Collars

- Crimped or Uncrimped options
- Made in the U.S.A. 
- Galvanized steel construction 24-28 gauge

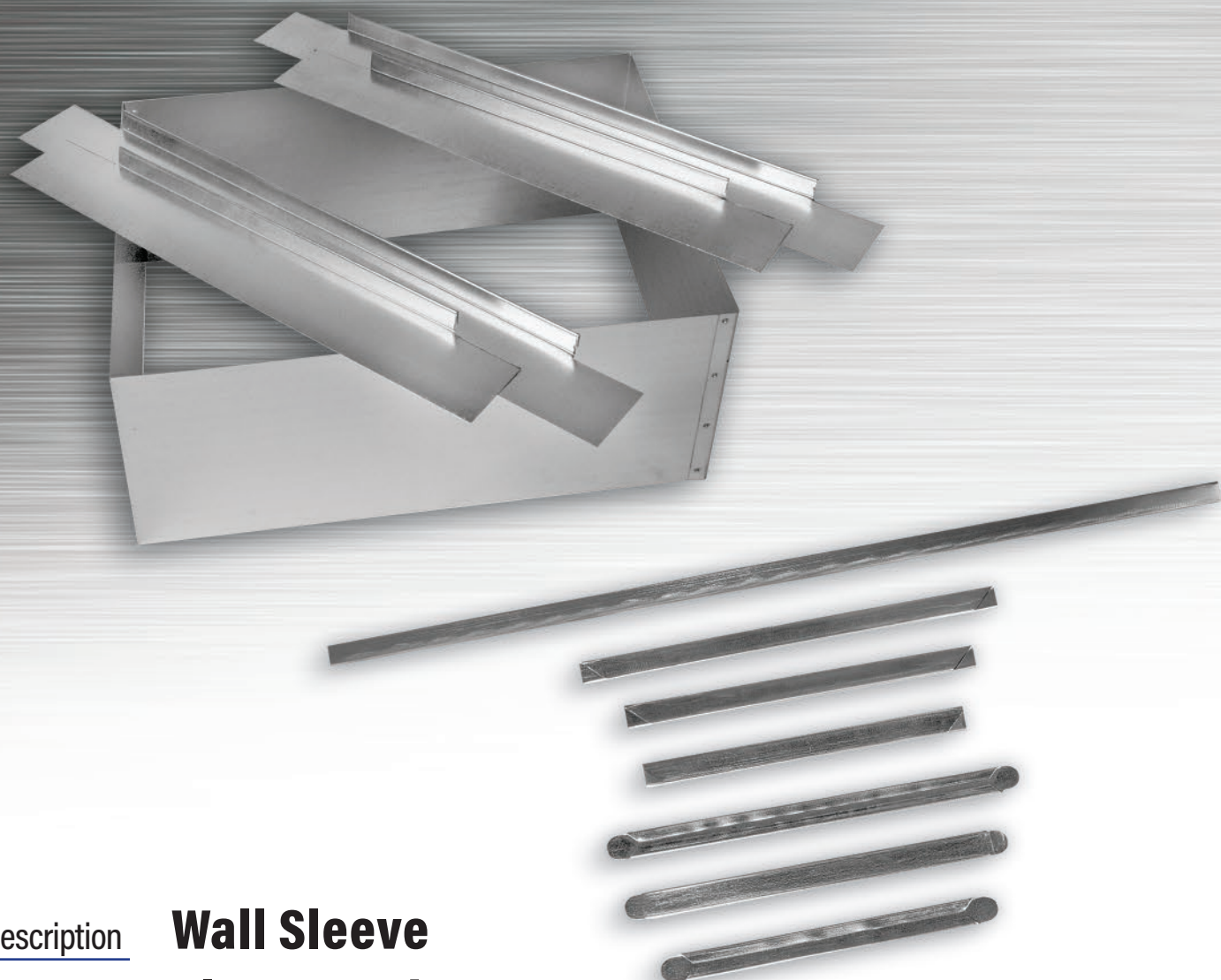
ROUND	RECTANGULAR
4" - 16"	8" - 12" Width
Standard of Flex Collar	20" - 24" Length

Description

Features

Dimensions

WALL SLEEVES / CLEATS / DRIVES



Description

Wall Sleeve Cleats / Drives

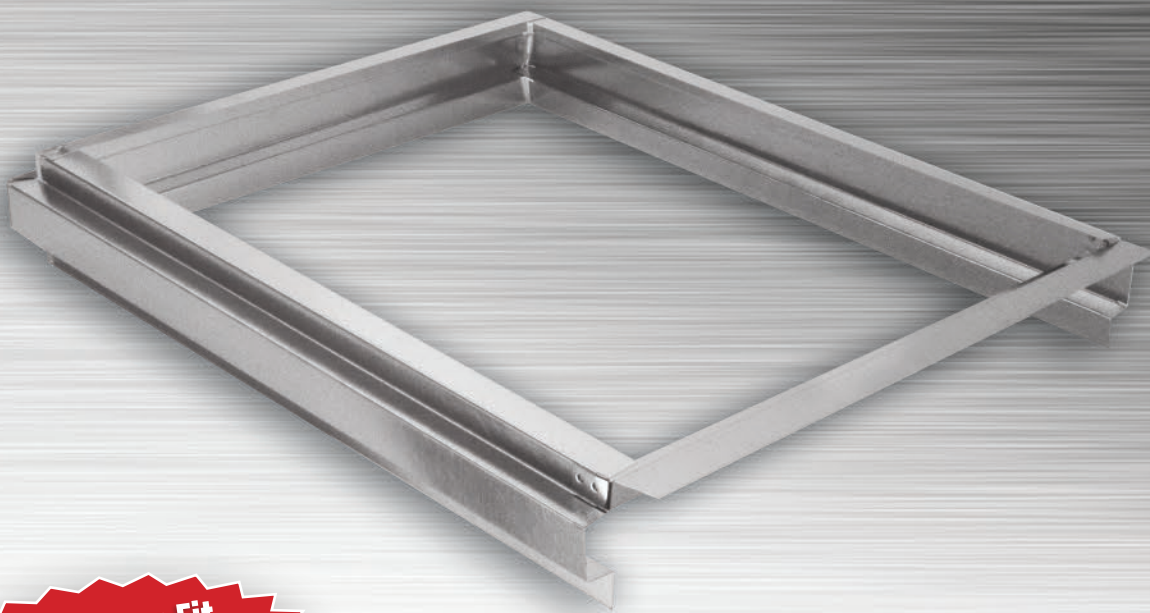
Features

- Made in the U.S.A. 
- Galvanized steel construction 24-28 gauge
- Sleeves / Cleats / Drives made to your specifications

Dimensions


- Sleeves: Custom sizes upon request
- Cleats / Drives: Custom sizes upon request

FILTER RACK



We Custom Fit
to All Manufacturer's
Specifications

Top or Side Load Filter Racks

-  ▪ Made in the U.S.A.
- Made of galvanized steel 24-28 gauge
- Custom Filter Frames made to your specifications

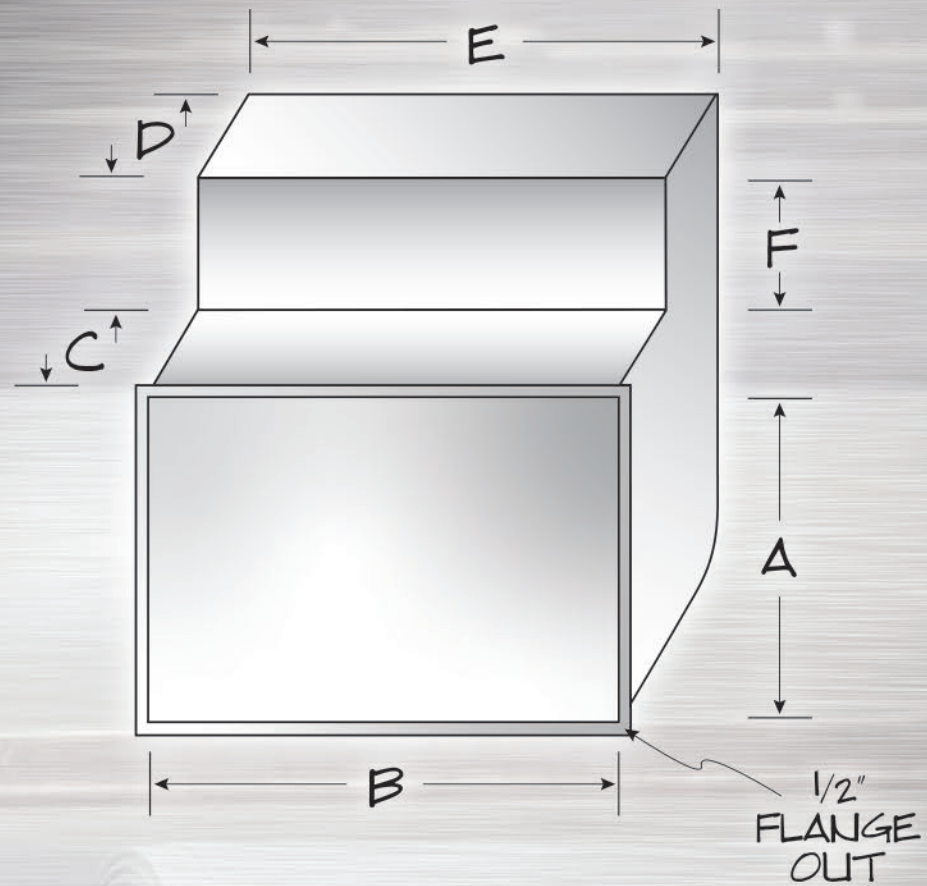
HEIGHT	WIDTH
14	20
14	25
16	20
16	25
20	20
20	25

Description

Features

Dimensions

MEASUREMENT KEY



A HEIGHT	B WIDTH	C OFFSET	D DEPTH	E WIDTH	F THROAT
16	20	ANY	8	20	1 1/2 or 6
16	25	ANY	8	24	1 1/2 or 6
16	25	ANY	10	24	1 1/2 or 6
16	25	ANY	12	24	1 1/2 or 6
20	25	ANY	8	24	1 1/2 or 6
20	25	ANY	10	24	1 1/2 or 6
20	25	ANY	12	24	1 1/2 or 6



COIL

METAL FABRICATION